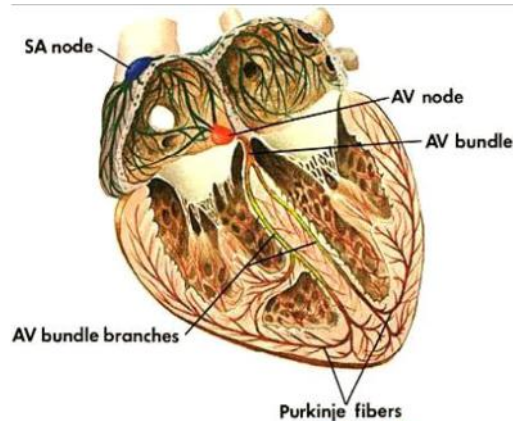


Class: 11
Subject: biology
Topic: Body fluid and circulation
No. of Questions: 20
Duration: 60 Min
Maximum Marks: 60

1. Pace maker is
- A. Instrument for measuring heart beat
 - B. Instrument for measuring pulse rate
 - C. Auriculo-ventricular node that Provides impulse for heart beat
 - D. Sinu-auricular node that provides impulse for heart beat

Detailed Answer:



Answer: D

2. How many double circulations are normally calculated by human heart per minute
- A. Seventy-two
 - B. Thirty-six
 - C. Eight
 - D. Sixteen

Detailed Answer:

Heart beats 72 times per minute which represents the number of double circulations of blood from heart to lungs to heart and then to the body.

Answer: A

3. The formation of clot in blood vessel is called
- A. Clotting
 - B. Agglutination
 - C. Thrombosis
 - D. None of the above

Answer: C

4. Blood pressure is force with which
- A. Blood comes out of atrium
 - B. Blood comes out of ventricle
 - C. Blood pushes against wall of blood vessels
 - D. Blood is pushed into legs

Answer: C

5. Point out odd combination
- A. Peyer's patches Lymphatic gland
 - B. Leydig cells - Testis
 - C. HCL - Oxyntic cells
 - D. Blood capillary wall- Connective tissue

Detailed Answer:

Blood capillary wall is made of endothelial tissues which is basically an epithelial tissue.

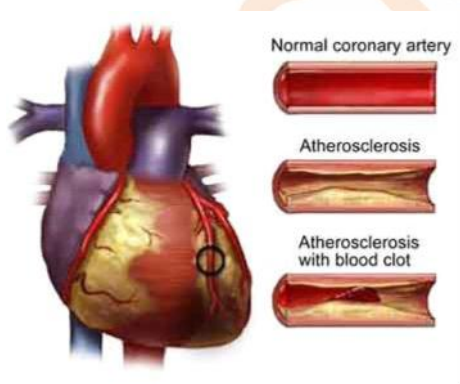
Answer: D

6. Lubb-dupp sounds are due to
- A. Closing of tricuspid and bicuspid valves
 - B. Blood flow through aorta
 - C. Closing of tricuspid and bicuspid valves followed by closing of semilunar valves
 - D. Closing of semilunar valves

Answer: C

7. Hardening of arteries due to deposition of cholesterol is
- A. Atherosclerosis
 - B. Thrombosis
 - C. Stenosis
 - D. Rhinitis

Detailed Answer:



Atherosclerosis is a blockage in the coronary artery.

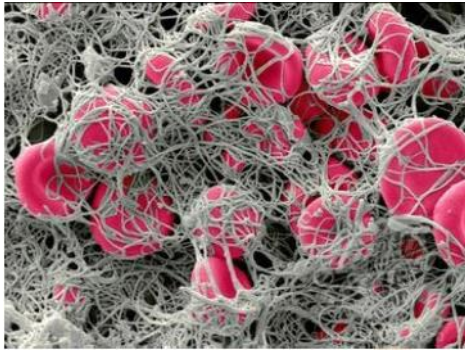
Answer: A

8. Origin of heart beat and its conduction is
- A. AVN→Bundle of His →SAN → Purkinje fibre
 - B. Purkinje fibres Purkinje fibres →AVN→SAN→
 - C. SAN →AVN→ Bundle of His
 - D. None of the above

Answer: C

9. A clot of blood contains
- A. Fibrinogen
 - B. Prothrombin
 - C. Thrombin
 - D. Fibrin

Detailed Answer:



Fibrins forming a network in a blood clot.

Answer: D

10. The coagulation of blood occurs due to
- A. Destruction of RBC
 - B. Destruction of WBC
 - C. Destruction of lymph
 - D. Destruction of blood platelets

Answer: D

11. Which one is correct
- A. Neuron = Cyton + Dendrite + Axon + Synapse
 - B. Lymph = Plasma + RBC + WBC
 - C. Blood = Plasma + RBC + WBC + Blood platelets
 - D. Plasma = Blood - lymphocytes

Answer: C

12. Pace maker of heart is
- A. AV node
 - B. Bundle of His
 - C. SA node
 - D. Purkinje fibres

Answer: C

13. Purkinje fibres are connected with Impulse conducting system of

- A. Heart
- B. Brain
- C. Skin
- D. Kidney nephrons

Answer: A

14. Which one of the following has an open circulatory system

- A. Octopus
- B. Pheretima
- C. Periplaneta
- D. Hirudinaria

Detailed Answer:

Periplaneta is the scientific name of cockroach and in all arthropods the circulatory system is an open type.

Answer: C

15. Thromboplastin is produced by

- A. Damaged tissues
- B. Blood platelets
- C. Both blood platelets tissues and damaged tissue
- D. Prothrombin

Answer: C

16. Which has the thickest wall?

- A. Right auricle
- B. Right ventricle
- C. Left auricle
- D. Left ventricle

Detailed Answer:

Left ventricle pumps the full volume of blood into the aorta to be distributed throughout the body.

Answer: D

17. The name of pace maker is

- A. S-A node
- B. A-V node
- C. Parasympathetic nervous system
- D. None of the above

Answer: A

18. Which one is an environment-related disorder

- A. Black lung disease mainly in workers of stone quarries and crushers
- B. Black baby disease (met haemoglobin aemia) due to heavy use of nitrogen fertilizers in the area
- C. NonHodgkin's lymphoma found mainly in workers involved in manufacture of neem based pesticides
- D. Skin cancer mainly in people exposed to benzene and methane

Detailed Answer:



Normal hand and hand with methaemoglobinemia.

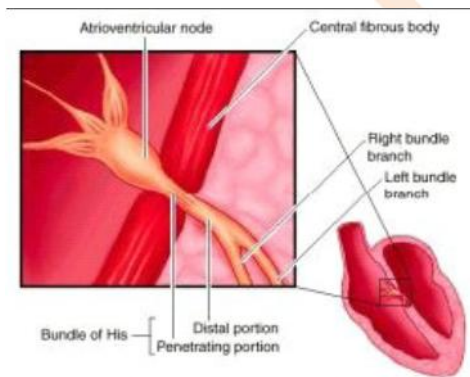
Answer: B

19. Bundle of his is found in

- A. Heart
- B. Auricles
- C. Ventricle
- D. Sinus venosus

Detailed Answer:

Answer: C



20. Constituent of blood involved in the process of clotting is

- A. White blood corpuscles
- B. Blood platelets
- C. Red blood corpuscles
- D. Plasma

Answer: B