

**Class: 11**

**Subject: biology**

**Topic: Neural Control and Coordination**

**No. of Questions: 20**

**Duration: 60 Min**

**Maximum Marks: 60**

1. Melanocyte stimulating hormone (MSH) is secreted by pituitary

- A. Anterior lobe
- B. Median lobe
- C. Posterior lobe
- D. Not any particular lobe

Answer: B

2. Route of reflex arc is

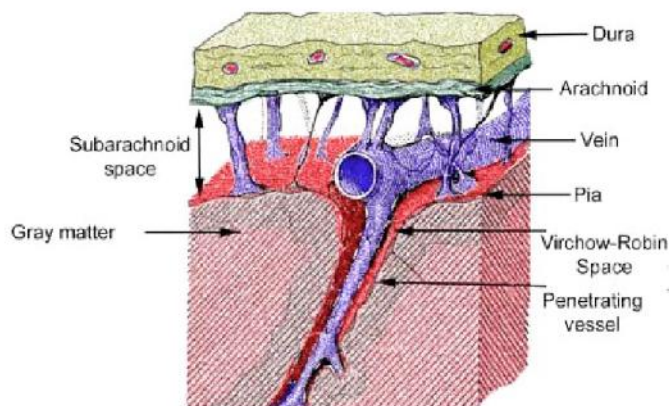
- A. Effectors, grey matter, motor fibres, sensory fibres and receptors
- B. Receptors, sensory fibres, grey matter and motor fibres
- C. Receptors, sensory fibres, grey matter, motor fibres and effectors
- D. Sensory fibres, grey matter, motor fibres, receptors and effectors

Answer: C

3. Subdural space is between

- A. Pia mater and arachnoid
- B. Arachnoid and duramater
- C. Pia mater and grey matter
- D. Grey matter and white matter

Detailed Answer:



Answer: B

4. Pineal body is from the surface of
- A. Hypothalamus
  - B. Cerebellum
  - C. Prosencephalon
  - D. None of the above

Answer: C

5. Ventricle connecting medulla oblongata with spinal cord is
- A. Fourth
  - B. Fifth
  - C. Third
  - D. Second

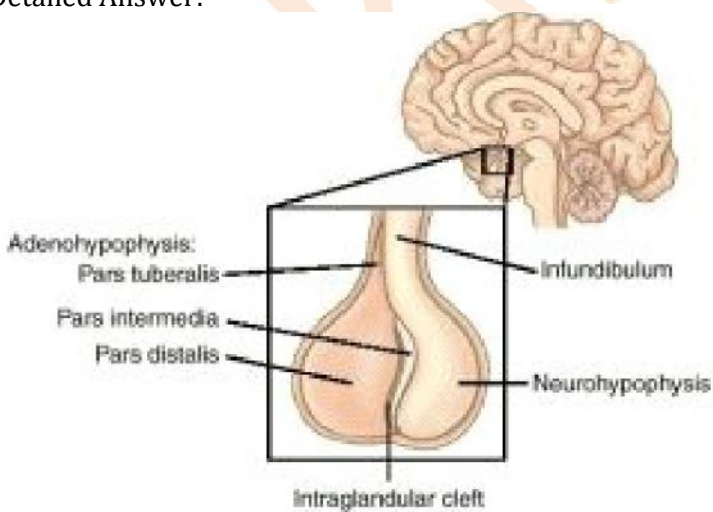
Answer: A

6. FSH and LH are
- A. Emergency hormones
  - B. Neurohormones
  - C. Gonadotropin hormones
  - D. Antistress hormones

Answer: C

7. The gonadotropic hormone is secreted by
- A. Posterior part of thyroid
  - B. Adrenal cortex
  - C. Adenohypophysis of pituitary
  - D. Interstitial cells of testis

Detailed Answer:



Answer: C

8. Loss of memory is caused by destruction of

- A. Cerebrum
- B. Cerebellum
- C. Medulla
- D. Diencephalon

Detailed Answer:

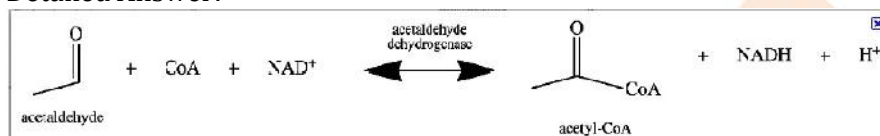
**Cerebrum is the centre for memory.**

Answer: A

9. Enzyme present in limited quantity in Asians for metabolism of alcohol is

- A. Alcohol dehydrogenase
- B. Succinate thiokinase
- C. Acetaldehyde dehydrogenase
- D. Both A and B

Detailed Answer:

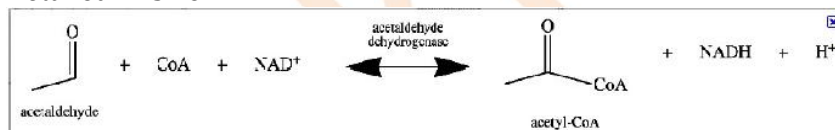


Answer: C

10. Enzyme required to oxidise acetaldehyde is

- A. Ethanol oxidase
- B. Acetaldehyde dehydrogenase
- C. Alcohol hydrogenase
- D. Glyceraldehyde dehydrogenase

Detailed Answer:



Answer: B

11. Which is correct about psychotropic drug

- A. Morphine leads to delusions and disturbed emotions
- B. Barbiturates cause relaxation and temporary euphoria
- C. Hashish causes after thought perceptions and hallucinations
- D. Opium stimulates nervous system and causes hallucinations

Answer: C

12. Third ventricle occurs in
- A. Cerebrum
  - B. Cerebellum
  - C. Medulla oblongata
  - D. Diencephalon

Answer: D

13. Which part of the human brain controls the breathing movements?
- A. Medulla oblongata
  - B. Cerebellum
  - C. Diencephalon
  - D. Cereberum

Answer: A

14. Energy content of alcohol is 74 kcal/gm. It is more than carbohydrates and slightly less than fats. Intake of alcohol provides
- A. Enough energy to body for its working
  - B. Releases heat energy
  - C. Uses energy of body for dissipation of alcohol produced heat
  - D. Both B and C

Answer: D

15. Alcohol is
- A. Hallucinogen
  - B. Tranquilliser
  - C. Stimulant
  - D. Depressant

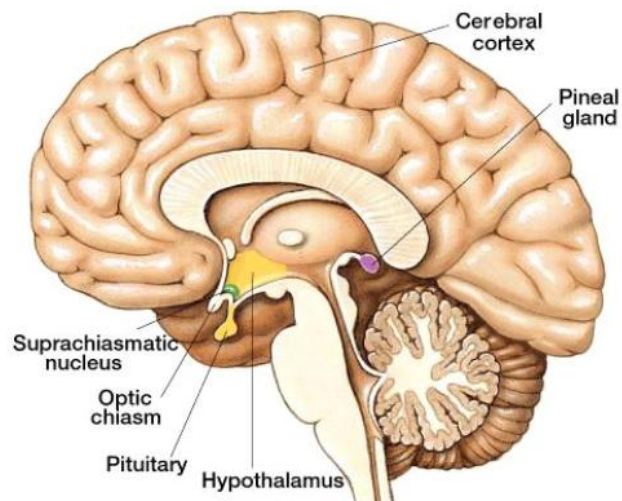
Answer: D

16. Pons connects
- A. Brain with spinal cord
  - B. Cerebrum with cerebellum
  - C. Two lobes of cerebellum
  - D. Two cerebral hemispheres

Answer: A

17. Pineal stalk is a fine tubular outgrowth from
- A. Roof of fourth ventricle
  - B. Roof of third ventricle
  - C. Roof of lateral ventricle
  - D. Floor of third ventricle

Detailed Answer:



Pineal stalk is a outgrowth from the roof of the third ventricle

Answer: B

18. Cerebrospinal fluid is formed by

- A. Ependymal cells
- B. Choroid plexus
- C. Neurons
- D. Neuroglial cells

Detailed Answer:

CSF is produced in the brain by modified ependymal cells in the choroid plexus

Answer: B

19. People addicted to opiates suffer from

- A. Sterility, loss of weight and interest in work
- B. Loss of interest in work
- C. Loss of weight
- D. Sterility

Answer: A

20. Opium, opiates and heroin are got from

- A. Thea
- B. Theobroma
- C. Papaver
- D. Cannabis

Answer: C