

Class: 12

Subject: Biology

Topic: Reproductive Health

No. of Questions: 20

Duration: 60 Min

Maximum Marks: 60

1. Vertebral column develops from

- A. Notochord
- B. Nerve cord
- C. Mesoderm
- D. Endoderm

Ans. A

2. The proctodaeum develops from

- A. ectoderm
- B. Mesoderm
- C. Endoderm
- D. None of the above

Ans. A

Solution:

Proctodaeum is the ectodermal depression of the caudal end of the embryo, which becomes the anal canal; called also anal pit, avian cloaca.

3. Progesterone is secreted by

- A. Corpus luteum
- B. Corpus callosum
- C. Adrenal cortex
- D. Pineal body

Ans. A

4. Accessory sex organ is

- A. Beard
- B. Breast
- C. Moustaches
- D. All the above

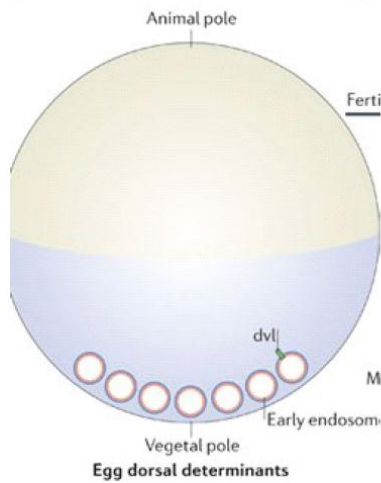
Ans. D

5. Vegetal hemisphere in frog's egg in water remains

- A. Downwards
- B. Upwards
- C. Directed towards left
- D. Directed towards right

Ans. A

Solution:



6. The stage of development at which implantation occurs in human female is

- A. Morula
- B. Zygote
- C. Blastocyst
- D. Neurula

Ans. C

Solution:

The dividing zygote produces a few cells called the blastomeres in the blastocyst.

7. Eggs are generally large in size due to the presence of

- A. Yolk
- B. Shell
- C. Vitelline membrane
- D. Plasma membrane

Ans. A

8. Contraceptive oral pills help in birth control by

- A. Killing of ova
- B. Preventing ovulation
- C. Killing the sperms
- D. Forming barrier between sperms and ova

Ans. B

9. Which hormone has no role in menstruation

- A. LH
- B. FSH
- C. GH
- D. All the above

Ans.C

10. What is true about cleavage divisions

- A. Blastomeres grow in size
- B. Early divisions are from animal pole to vegetal pole
- C. They resemble mitotic divisions
- D. Blastomeres consume little oxygen

Ans. C

Solution:

A secondary spermatocyte produces 2 spermatids which in turn matures into two sperms.

11. Purulent discharge and inflammation of genital tubes occur in

- A. Syphilis
- B. Genital warts
- C. Gonorrhoea
- D. Chancroid

Ans. C

Solution:

It occurs in both men and women.

12. Which is correct

- A. Fluid-filled space of blastula is known as archenteron
- B. Blastula of frog is called discoblastula
- C. In blastulation major presumptive and organ forming areas are segregated into definite points
- D. Blastulation establishes three germinal layers

Ans. C

13. During gastrulation blastomeres move from the surface to their destination in the embryo. These movements are called

- A. Migratory movements
- B. Formative movements
- C. Morphogenetic movements
- D. Both B and C

Ans; D

14. Secondary sex organ is

- A. Testis
- B. Breast
- C. Beard
- D. Vas deferens

Ans. D

Solution:

It carries the sperms produced by the testes

15. Cleavage in the fertilised egg of humans

- A. Starts in uterus
- B. Is meroblastic
- C. Starts when egg is in fallopian tube
- D. Is discoid

Ans. C

16. Gastrulation is a process of

- A. Formation of ectoderm
- B. Formation of blastula
- C. Formation of gastrula
- D. None of the above

Ans. C

17.

Match the columns

I		II	
(a)	Pill	(i)	Prevents sperm reaching cervix
(b)	Condom	(ii)	Prevents implantation
(c)	Vasectomy	(iii)	Prevents ovulation
(d)	Copper T	(iv)	Semen contains no sperm

- A. a-t, b--r; c-p. d-s
- B. a-s, b-q, c-r; d-t
- C. a-t, b-p. c-s. d-r
- D. a-s. b-r, c-p d-q

Ans. D

18. Phase of menstrual cycle in human that lasts for 7-8 days is

- A. Follicular phase
- B. Ovulatory phase
- C. Luteal phase
- D. Menstruation

Ans. A

Solution:

The development of the primordial follicles.

19. Presence of massive yolk at one end makes the egg

- A. Telolecithal
- B. Mesolecithal
- C. Centrolecithal
- D. Oligolecithal

Ans.A

20. Egg in mammals is fertilized in

- A. Ovary
- B. Oviduct
- C. Uterus
- D. Vagina

Ans. B