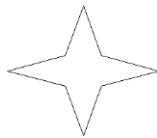


Class: 6
Subject: Mathematics
Topic: Symmetry
No. of Questions: 18

- Q1. List any four symmetrical objects from your home or school.
- Q2. Consider the letters of English alphabets A to Z. List among them the letters which have
- (a) Vertical lines of symmetry (like A)
 - (b) Horizontal lines of symmetry (like B)
 - (c) No lines of symmetry (like Q)
- Q3. If you are 100 cm in front of a mirror, where does your image appear to be? If you move towards the mirror, how does your image move?
- Q4. Find the number of lines of symmetry in each of the following shapes. How will you check your answer?

(a)



(b)

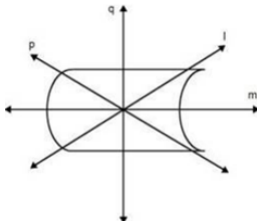


- Q5. Write the types of symmetry? Also Explain them.
- Q.6 A figure has _____ symmetry if a line can be drawn dividing the figure into two identical parts
- Q.7 The number of lines of symmetry of a Isosceles triangle is
- Q.8 The number of lines of symmetry of a rectangle is

Q.9 Match the following :

Figures	line of symmetry
(a) Equilateral triangle	Four
(b) Square	many
(c) Circle	three

Q.10 In the figure below, the mirror line or the axis of symmetry is _____.



- A. Line q
- B. Line p
- C. Line l
- D. Line m

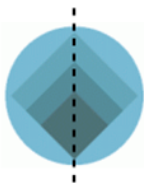
Q.11 The number of lines of symmetry of compass is

- A. 1
- B. 2
- C. 0
- D. None of these

Q.12 Is the dotted line a line of symmetry?



Q. 13 Is the dotted line a line of symmetry?

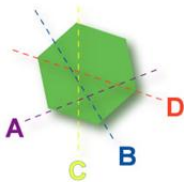


Q.14 Is the dotted line a line of symmetry?

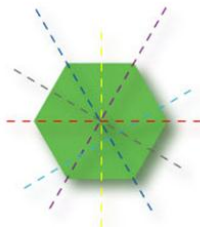


Q.15 Select the line of symmetry.

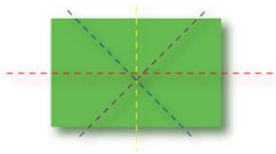
- A. a
- B. b
- C. c
- D. d



Q.16 How many lines of symmetry are in the shape?



Q.17 How many lines of symmetry are in the shape?



Q.18 Is the dotted line a line of symmetry?

