

**CBSE Board
Class VI
Mathematics Term I
Sample Paper - 2**

1) The smallest three digit number having distinct digits is?

- (A) 123
- (B) 101
- (C) 102
- (D) 201

2) If $1*548$ is divisible by 3, then * can take the value?

- (A) 0
- (B) 7
- (C) 2
- (D) 8

3) The predecessor of 1 in whole numbers is?

- (A) 2
- (B) 0
- (C) -1
- (D) None of these

4) What is the additive inverse of 6?

- (A) 6
- (B) 1
- (C) 0
- (D) -6

5) If $\frac{1}{2} + \frac{1}{x} = 2$, then $x = ?$

- (A) $\frac{2}{5}$

(B) $\frac{5}{2}$

(C) $\frac{3}{2}$

(D) $\frac{2}{3}$

6) 25 liters and 25 ml is equal to?

- (A) 25.25 liters
- (B) 25.250 liters
- (C) 25.0025 liters
- (D) 25.025 liters

7) Quotient of z by 6 is multiplied by y is written as?

- (A) $\frac{z}{6y}$
- (B) $\frac{6z}{y}$
- (C) $\frac{zy}{6}$
- (D) $\frac{6y}{z}$

8) Find the ratio of: 200 grams to 4 kg?

- (A) 1 : 20
- (B) 10 : 20
- (C) 5 : 4
- (D) 10 : 2

9) What is the value of $(39) + (-46) + (-10) + (79)$?

- (A) 62
- (B) -62

- (C) +76
- (D) -76

10) Find the breadth of the rectangle whose perimeter is 360 cm and whose length is 100 cm.

- (A) 90 cm
- (B) 36 cm
- (C) 45 cm
- (D) 80 cm

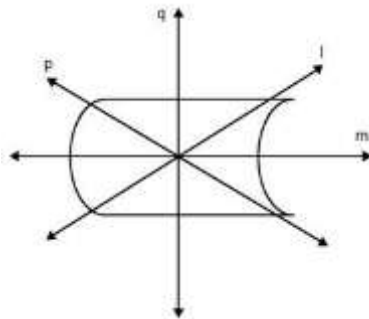
11) In a Mathematics test, the following marks were obtained by 40 students.

5, 7, 8, 9, 3, 2, 1, 6, 5, 8, 8, 5, 4, 7, 2, 6, 5, 4, 9, 1, 7, 3, 8, 9, 5, 4, 6, 7, 8, 3, 5, 4, 7, 8, 3, 2, 7, 9, 5, 9.

The number of students who obtained less than 4 marks is?

- (A) 10
- (B) 9
- (C) 8
- (D) 7

12) In the figure below, the mirror line or the axis of symmetry is?



- (A) Line p
- (B) Line q
- (C) Line l
- (D) Line m

13) A ____ is used to compare lengths.

- (A) Divider
- (B) compasses
- (C) ruler
- (D) protractor

14) The supplementary angle of $\frac{1}{2}$ of 120° is?

- (A) 130°
- (B) 120°
- (C) 60°
- (D) 100°

15) Determine the difference of the place value of two 8's in 578493087.

- (A) 7999920
- (B) 7989902
- (C) 7887980
- (D) 7999902

16) The smallest number which when diminished by 3 is divisible by 11, 28, 36, and 45 is

- (A) 1257
- (B) 1260
- (C) 1263
- (D) None of these

17) Using distributivity of multiplication over addition of the whole numbers, find the product of 736×103 ?

- (A) 75808
- (B) 73600
- (C) 76300
- (D) 75880

18) Find the value of : $-7 - 8 - (-25)$

- (A) 40
- (B) -10
- (C) -40
- (D) 10

19) A fraction equivalent to $\frac{45}{105}$ is?

- (A) $\frac{6}{14}$
- (B) $\frac{4}{7}$
- (C) $\frac{5}{7}$
- (D) $\frac{7}{5}$

20) $4\frac{7}{8}$ is equal to?

- (A) 4.78
- (B) 4.87
- (C) 4.875
- (D) None of these

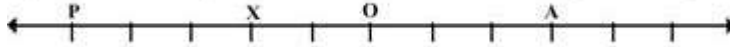
21) The population of a certain species of insects is x now. It becomes y times itself after one week. What will be its population after 2 weeks?

- (A) y^2x
- (B) $2yx$
- (C) yx^2
- (D) $2 + xy$

22) A worker is paid Rs 162.50 for 5 days. What should be paid to him for 28 days?

- (A) 950.50
- (B) 910.00
- (C) 710.50
- (D) 805.50

23) In the figure below, point O represents zero. Point X represents the temperature of Srinagar, point P represents of Shimla and point A represents the temperature of Nainital on the same day. Which place has the highest temperature?



- (A) Srinagar
- (B) Shimla
- (C) Nainital
- (D) None of these

24) A polygon having 3 sides is called a?

- (A) Pentagon
- (B) Rectangle
- (C) Square
- (D) Triangle

25) The fraction to be added to $6\frac{7}{15}$ to get $8\frac{1}{5}$ is equal to?

- (A) $\frac{11}{15}$
- (B) $1\frac{11}{15}$
- (C) $\frac{44}{3}$
- (D) $\frac{3}{44}$

- 26) The decimal form of five hundreds three tens two ones and eight tenths is?
- (A) 532.8
 - (B) 523.8
 - (C) 502.8
 - (D) 538.8
- 27) A toy is placed in front of a mirror at a distance of 80 cm from it, then the reflected image is formed at a distance of ____ cm from the mirror?
- (A) 40
 - (B) 80
 - (C) 100
 - (D) 160
- 28) In a city there are two shops which sell groceries. The sales per month of the first shop are Rs 38,000 and that of the second shop are Rs 27,000. The total annual sales of both the shops are?
- (A) 78000
 - (B) 65000
 - (C) 780000
 - (D) 650000
- 29) The product of three consecutive numbers is always divisible by?
- (A) 6
 - (B) 7
 - (C) 8
 - (D) 10
- 30) Kirti and Tina go for a morning walk. Kirti goes around a rectangular field of length 275 m and breadth 125 m. Tina goes around a square field of side 225 m. The correct statement among the following is?
- (A) Both Kirti and Tina cover equal distance in each round.
 - (B) Kirti covers 100 m more distance than Tina in each round.
 - (C) Tina covers 100 m more distance than Kirti in each round.
 - (D) Tina covers 50 m more distance than Kirti in each round.