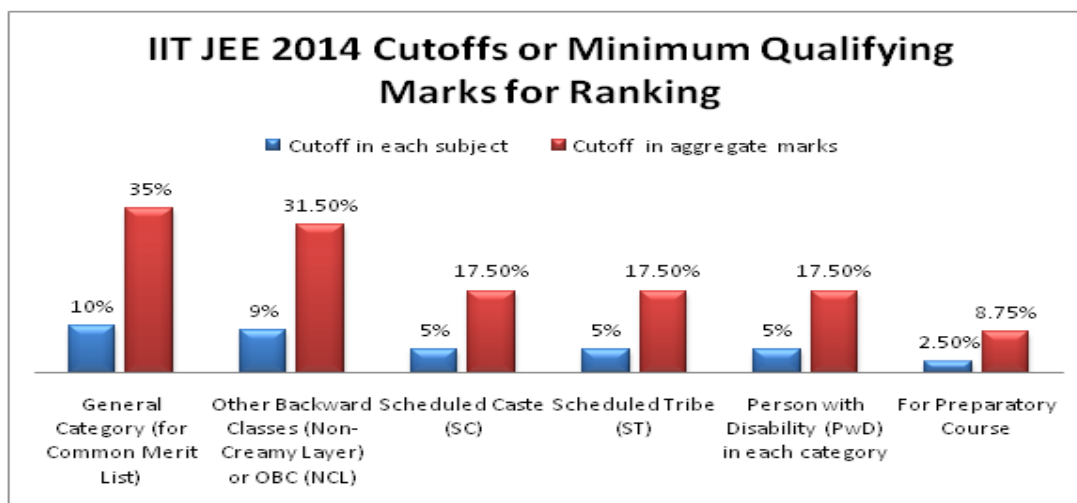


Paper Analysis - JEE (Advanced) 2014

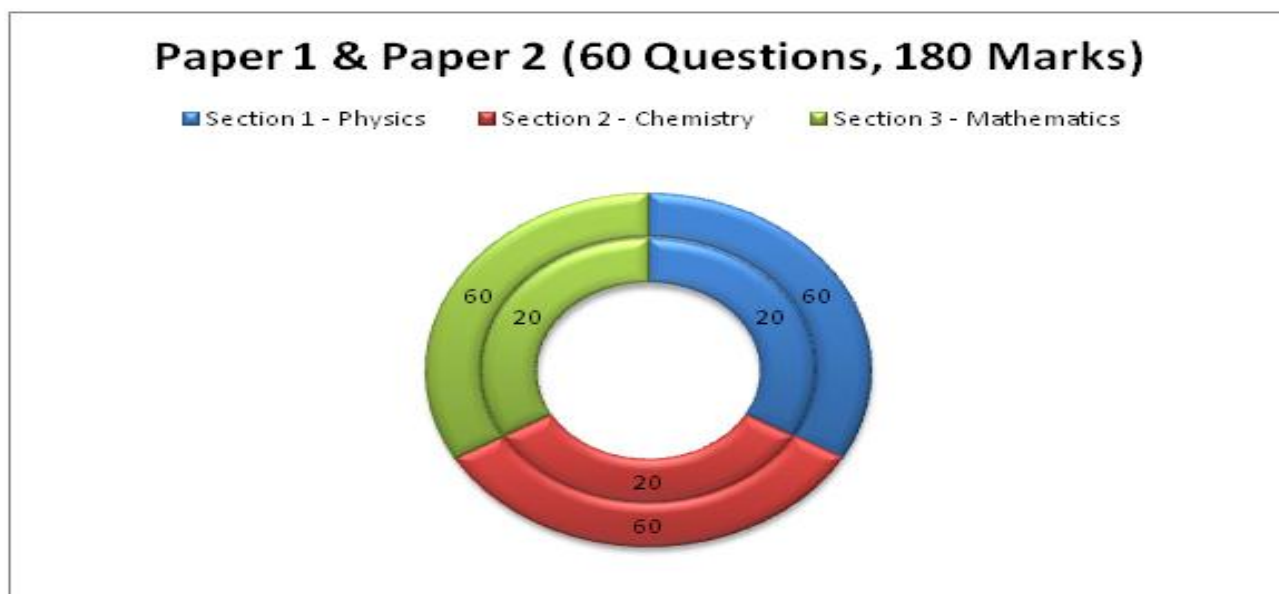
Here are some important points of IIT JEE 2014 paper analysis that we already know about:

- **Category-wise MQMR or JEE Cutoffs to be included in IIT JEE 2014 Merit List**

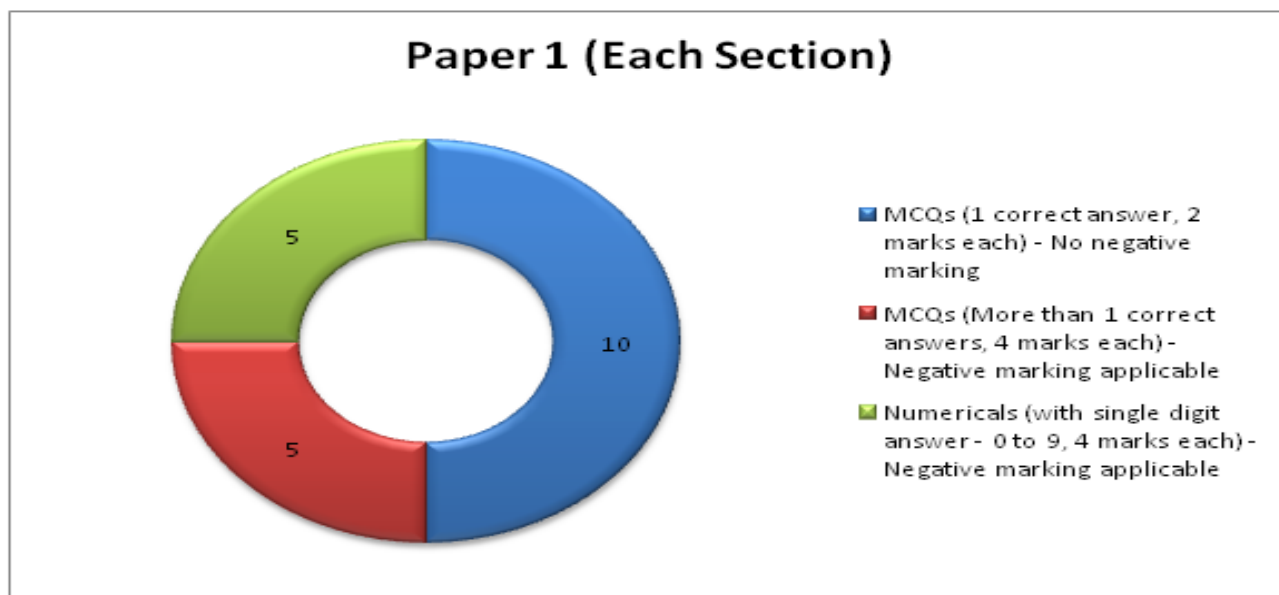


Besides, detailed **JEE Advanced 2013** paper analysis revealed some clues to the paper pattern and types of questions you can exam this year.

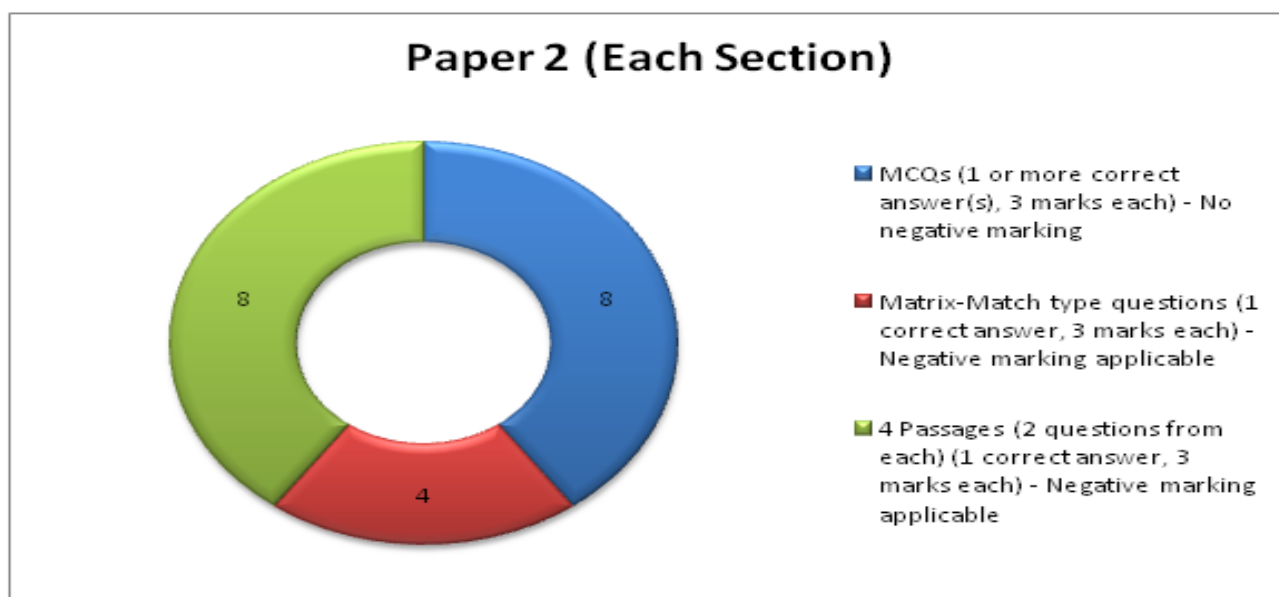
- **Subject-wise Marks Distribution in Paper 1 & Paper 2 (Based on 2013)**



- **Weightage to Different Types of Questions in Paper 1**



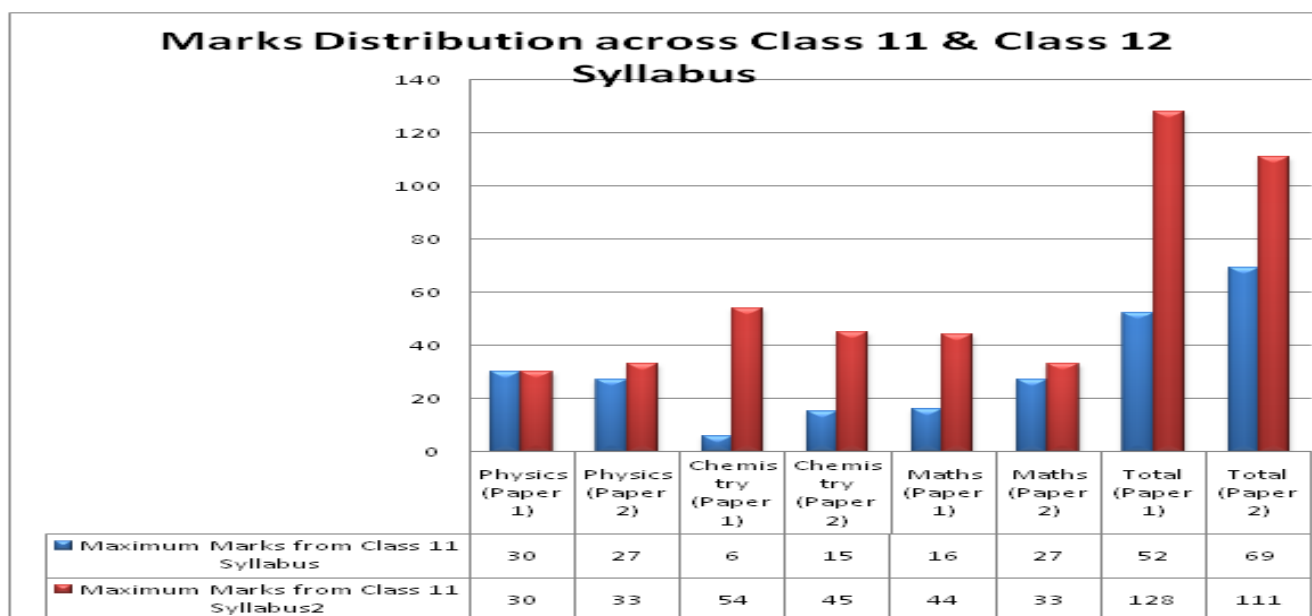
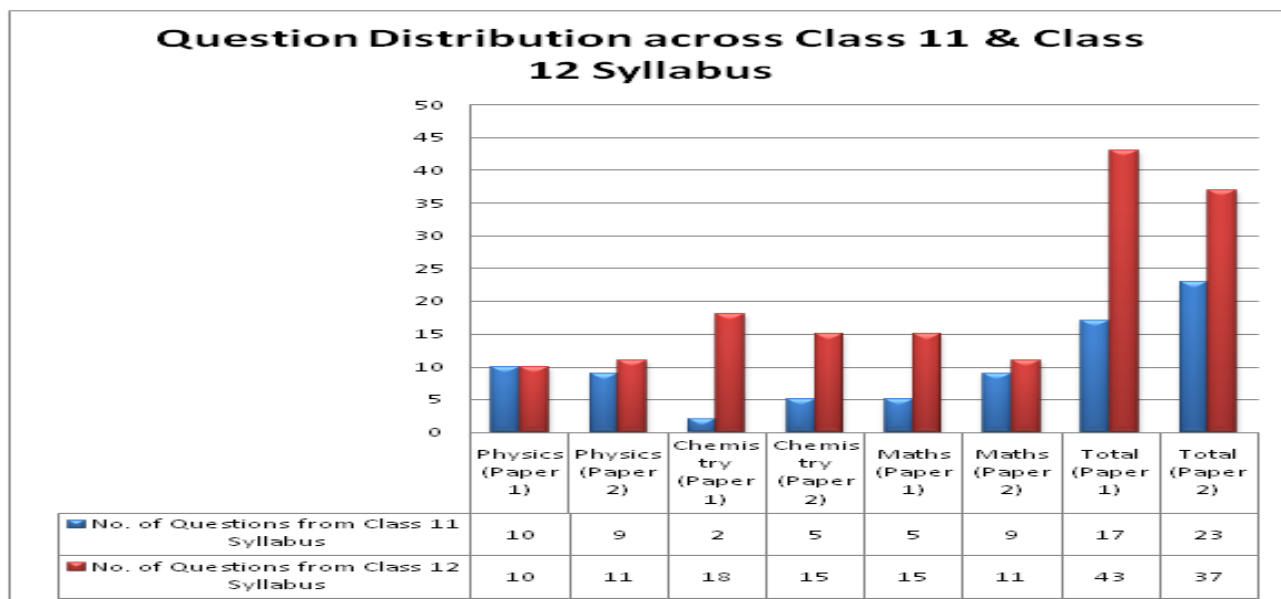
- **Weightage to Different Types of Questions in Paper 2**



- **Both in Paper 1 and Paper 2, in sections which have negative marking, there is a penalty of -1 mark for wrong answer.**

Out of 1,50,000 students shortlisted last year, only about 1.25 lakh students took JEE Advanced exam on June 2, 2013. Have a look at other details 2013 analysis reveals:

- **Question and Marks Distribution across Class 11 and Class 12 Syllabus in Paper 1 & Paper 2**



- **Combined Difficulty Level Analysis for both Paper 1 & Paper 2**

